

Our Story

Warrior was founded in 1978 and began manufacturing structural support systems for the grain handling industry including conveyor trusses, support towers, and stair platform systems. After new ownership acquired the company in 2002, Warrior expanded to serve additional industries including feed, mining, food processing, sand and gravel, refining, fertilizer, water treatment, biodiesel and ethanol. Warrior also made a substantial investment in equipment to fabricate structural steel for the construction industry. Warrior received AISC certification from the American Institute of Steel Construction in 2011 as well as CWB certification from the Canadian Welding Bureau that same year. In 2012 Warrior expanded its product line to include bulk weigh systems and hopper cones. In 2016 Warrior again expanded its product line to include material handling equipment.

Located in Hutchinson, Minnesota Warrior manufactures in a state of the art 150,000 square foot facility. Our clients have come to expect Warrior's commitment to providing the highest quality products that are efficiently produced to meet our scheduled demand.



STRUCTURAL STEEL FABRICATION

**CUSTOM ENGINEERED PRODUCTS THAT
DELIVER SOLUTIONS**

STRUCTURAL STEEL FABRICATION



Mailing Address:
1145 5th Avenue SE
Hutchinson, MN 55350

Warrior Mfg., LLC
Ph: 320-587-5505
Fax: 320-587-3040
E-mail: sales@warriormfgllc.com

www.warriormfgllc.com

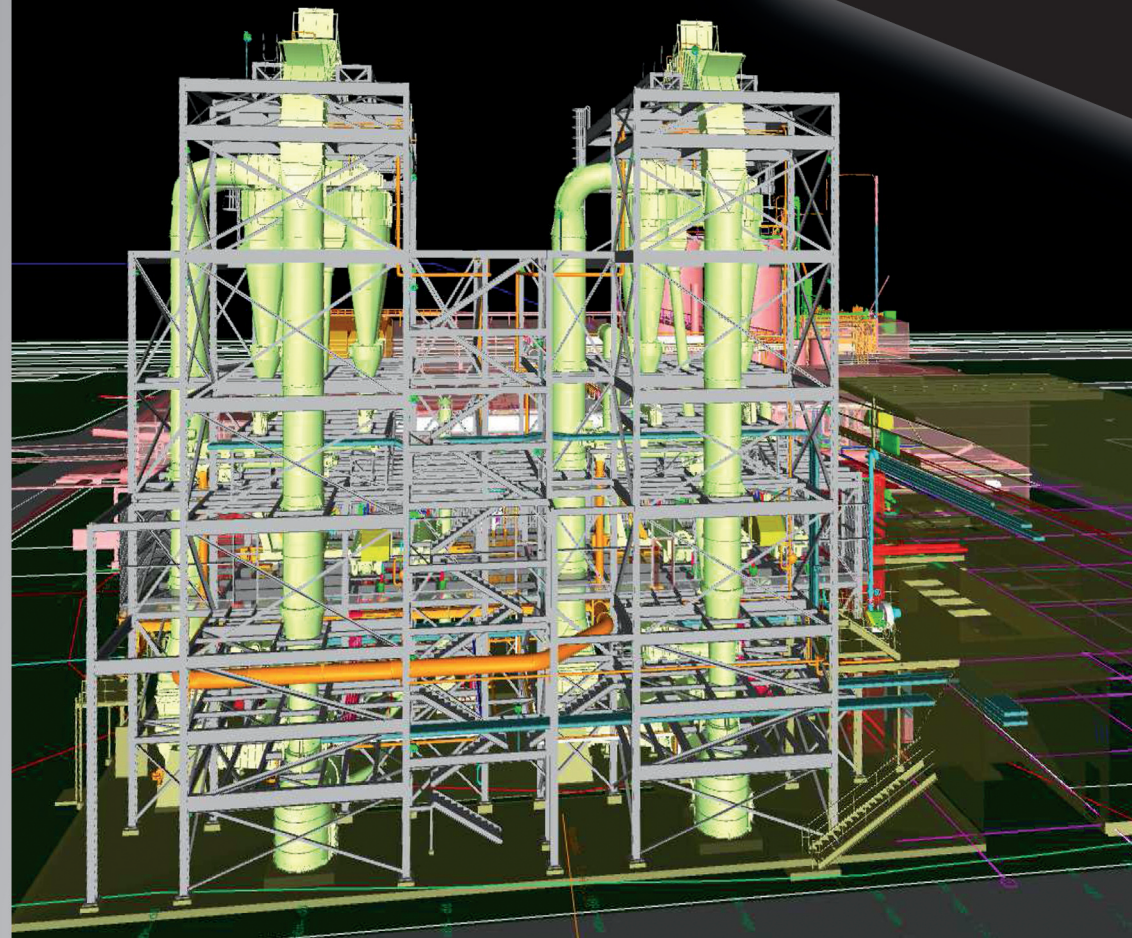
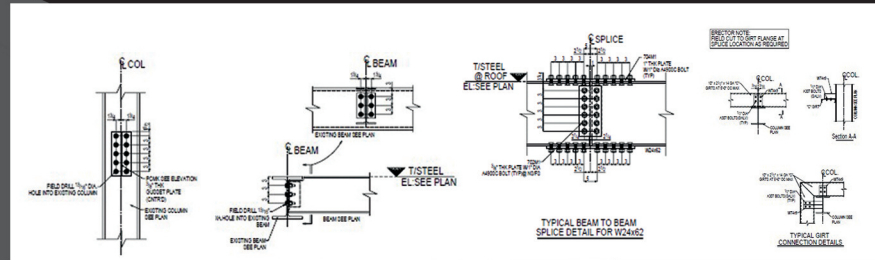


www.warriormfgllc.com



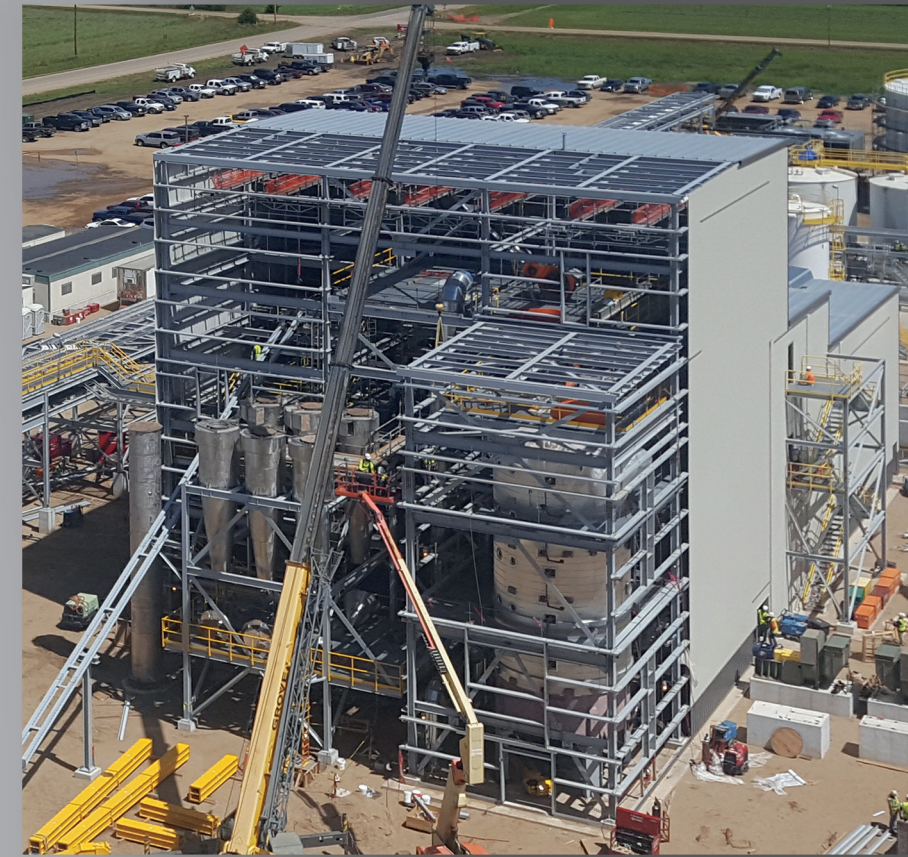
DETAIL AND FABRICATE FROM CONSTRUCTION DRAWINGS

- In-house 3-D design and steel detailing
- AISC Certified
- Welders certified to AWS D1.1 and CWB 47.1
- Full In-house paint capabilities
- Connections can be designed and detailed



**FROM CONCEPT TO CONSTRUCTION,
WARRIOR HAS THE STAFF OF ENGINEERS
TO MAKE YOUR PROJECT A SUCCESS**

STRUCTURAL STEEL FABRICATION



INDUSTRIES SERVED

- | | |
|---------------------|------------------------|
| • Grain & Feed | • Water Treatment |
| • Ag-Industrial | • Renewable Fuels |
| • Export Facilities | • Natural Gas |
| • Mining | • Chemical Refineries |
| • Food Processing | • Oil & Gas Refineries |

